



PAKISTAN HOME TEXTILE



TRADE DEVELOPMENT AUTHORITY OF PAKISTAN



TDAP INTRODUCTION

Trade Development Authority of Pakistan is the premier trade promotion organization mandated to develop and promote products and services of the country in international markets.

TDAP implements policies and directives of Federal Government and its Board of Directors for enhancing, promoting and facilitating trade.

TDAP supports and facilitates businesses through latest information and capacity building initiatives to enhance and improve their leverage in international trade.

To achieve its objectives, TDAP organizes as well as participates in local & international trade fairs, country specific exhibitions, trade delegations, conducts seminars and organizes contacts and information exchange events both physically as well on digital platforms.

This publication is part of the efforts of TDAP to share details and showcase Pakistan's products and services in international markets.

PRODUCT PROFILE + HS CODE

Home textile market of Pakistan is segmented by type (bed linen, kitchen linen, bath line, upholstery), by end user (residential, hospital, hospitality) and by distribution channel (supermarkets, retail stores, online and others). The home textiles segment has become increasingly popular around the world, and the Home Textile Manufacturers in Pakistan are delivering a higher degree of customer satisfaction and product quality in global market

HS Code	Description
6301	Blankets and travelling rugs of all types of textile materials
6302	Bedlinen, table linen, toilet linen and kitchen linen of all types of textile materials
6303	Curtains, incl. drapes, and interior blinds; curtain or bed valances of all types of textile materials
6304	Articles for interior furnishing, of all types of textile materials

Source: ITC

PRODUCTION AREASIN PAKISTAN

The key cities which are main centers of towel manufacturing are Karachi, Lahore, Faisalabad, Multan, Sialkot, Hyderabad, and Jhang.

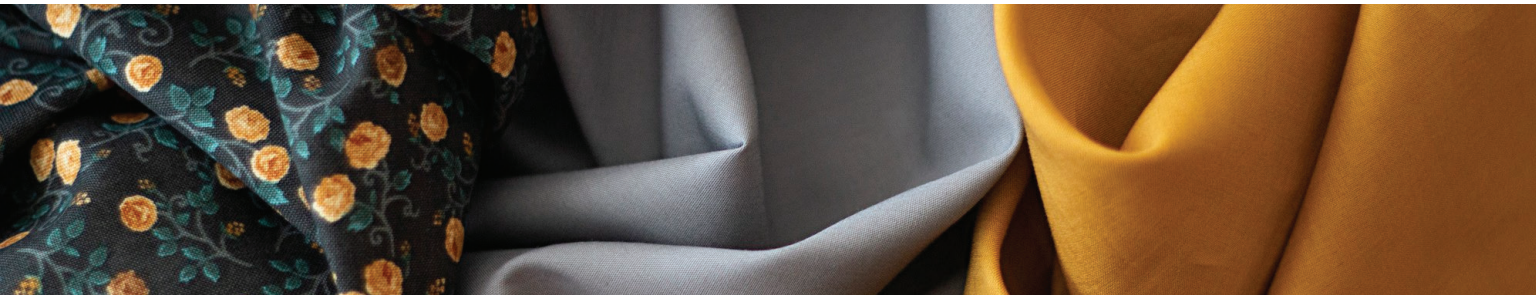


PRODUCT RANGE WITH TECHNICAL SPECIFICATIONS:-

(Woven fabric containing 100 % Cotton/ CVC / PC blend (Ratio & Non-Ratio))

Sheet sets, duvet sets, bed in a bag, pillowcases, bedspreads, blankets, comforters and pillowsets.

Yarn Count	Thread Count	Construction	Weave	GSM
30	144	30x30 / 76x68	1/1.	122
40	170	40x40 /100x70	1/1.	109
40	172	40x40 / 110x62	1/1.	110
30	184	30x30 /120x64	1/1.	157
40	200	40x40 / 110x90	1/1.	128
30	200	30x30 /130x70	2/1.	171
60	250	60x60 /135x115	1/1.	107
40	252	40x40 /144x108	1/1.	161
60	276	60x60 /186x90	4/1.	118
60	280	60x60/190x90	4/1.	119
60	286	60x60 / 180x106	4/1.	122
60	286	60x60 / 175x111	4/1.	122
80 & 60	384	80x60 /198x186	4/1. , Stripe Satin	143
80	386	80x80 / 232x154	4/1.	124
80	386	80x80 / 222x164	4/1.	124
120	772	120x120 /244x528	4/1. , Stripe Satin	165
120 & 130	992	120x130 /232x760	4/1. , Stripe Satin	199



Upholstery, Toilet and kitchen linens, wash cloths, aprons, Table linens, including tablecloths, cloth napkins, place mats, Curtains & draperies, and Floor coverings etc.

Yarn Count	Thread Count	Construction	Weave	GSM
8 & 8	86	8x8 / 43x43	1/1.	275
7 & 7	108	7x7 / 70x38	3/1.	395
10 & 16 (spandex dual core)	111	10x16/ 65x46	3/1.	240
16 & 8	112	16x8 / 84x28	Half Panama	224
20/2 & 10	112	202 x 10 / 70 x 42	1/1.	287
16 & 10	144	16x10 / 96x48	2/1.	276
30/2 & 16	144	302 x 16 / 96 x 48	2/2. Matt	241
16 & 12	164	16x12 / 108x56	3/1.	292

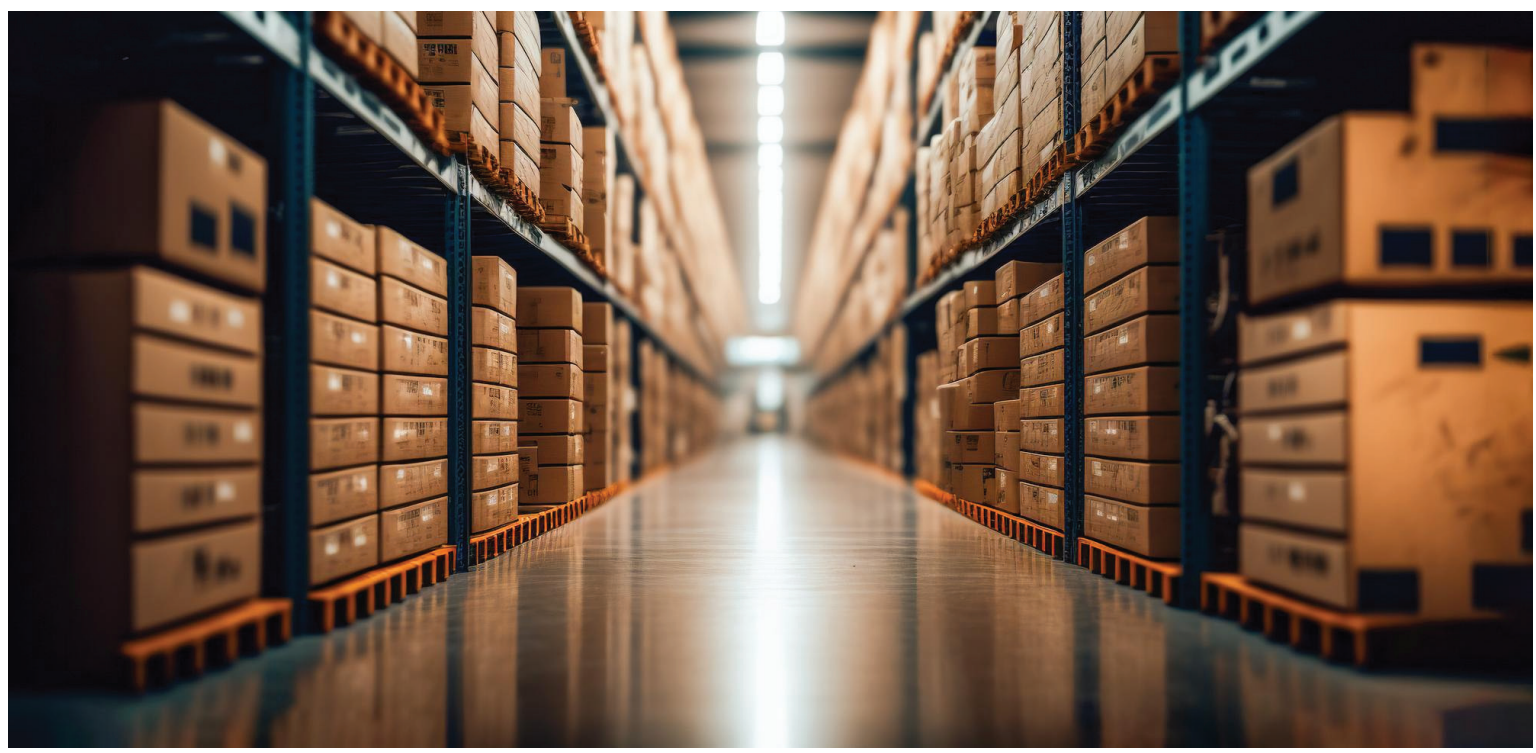
TESTING / CERTIFICATIONS/ REGISTRATION AGENCIES

- WRAP : Worldwide Responsible Accredited Production.
- SGS: ISO 9001:2015
- Sedex
- BSCI – Business Social Compliance Initiative.
- Oeko-Tex Standard 100: Confidence in Textile.
- REACH- Substance Of Very High Concern (SVHC) Assessment Certificate
- Nordic Swan Eco Labels
- The Global Organic Textile Standard
- ASTM Standards like D5433 – 12, D5433 – 12
- C2C Certified



PACKAGING & STORAGE

Packing of Home Textile's Products usually consists of a clear PVC bag or sometimes more environment friendly options are used. Elaborate Packing is done for gift or fancy items. The label inside the clear bag has a visual of the product inside to give customer an idea of the design and color coordination of components and final look. Language for care instruction varies from retailer to retailer, depending on the target market.



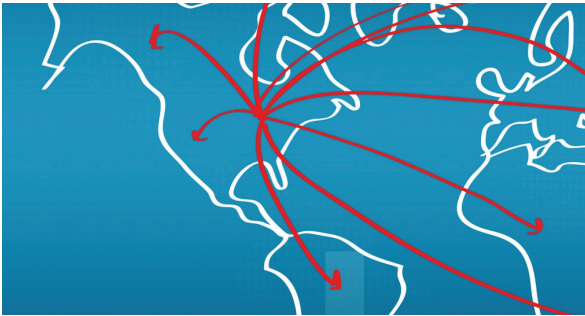
TOP IMPORTING COUNTRIES

Country	Value Exported (USD 1000)
United States of America	1312636
United Kingdom	591899
Netherlands	402646
Germany	365195
Belgium	188049
Italy	186891
Spain	163415
France	159172
Australia	94523
Poland	93689
Denmark	70136

Source: Pakistan Bureau of Statistics

Year	Trade Value (US\$ Thousands)
2017	3,331,572
2018	3,434,127
2019	3,425,444
2020	3,438,000
2021	3,709,319
2022	4,404,214

Source: Pakistan Bureau of Statistics





Mr. Muhammad Ahmed Khan
Asst. Director (Product Officer)
Email: ahmed.khan@tdap.gov.pk
CONTACT NO: +92-3164116428, 021-99225810

Trade Development Authority of Pakistan, Ministry of Commerce
FTC Building, Block-A, Shahrah-e-Faisal, Karachi - Pakistan
Tel: +92-21-99206487-90 UAN: 111-444-111
URL: www.tdap.gov.pk